

AD Squarewave M781

Overview

Frequency Band

UHF 860 - 960 MHz

Chip Attachment Technology

Direct Chip Attach

Chip

Impinj M781

Antenna Dimensions

93 x 11 mm / 3.66 x 0.43 in

International Standard

ISO/IEC 18000-63, EPC Gen2 V2

Industry Segments

Industry
Logistics
Automotive

Applications

Home Essentials
Supply Chain Management
Inventory and Logistics

RoHS

EU Directive 2011/65/EC and Directive
(EU) 2015/863

REACH

Regulation (EC) No 1907/2006



High performance condensed to the max

AD Squarewave M781 inlays and tags are designed for global retail, industrial and supply-chain applications, offering excellent performance not only on low detuning materials such as cardboard and plastic, but also on materials with high dielectric effect. With relatively narrow width, this product has a flat global performance over whole UHF band on variety of materials.

AD Squarewave is equipped with the M781 IC from Impinj. The IC comes with 128-bit EPC memory, 512-bit user memory, and offers an enhanced "autotune" adaptive RF tuning feature and helps high performance across different materials and challenging environments. In addition, the IC has an improved read and write sensitivity, enabling faster and more accurate bulk reading compared to Impinj Monza 4. The M781 IC is compatible with the global GS1 UHF Gen2v2 standard and has a privacy mode that enables loss prevention and protects consumer privacy.

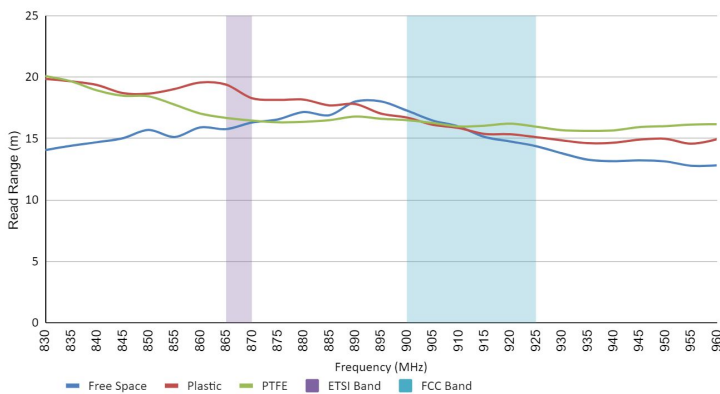
AD Squarewave M781 inlays and tags are a size-optimized 97 mm / 3.8 inch form factor, making them suitable for use with a wide range of supply chain labels, and are available in dry, wet and label delivery formats.

Like all RFID products from Avery Dennison, AD Squarewave M780 inlays are manufactured according to the industry's highest quality standards, as confirmed by the RFID Lab at Auburn University: The inspection body awarded Avery Dennison its first comprehensive and significant ARC accreditation for quality.

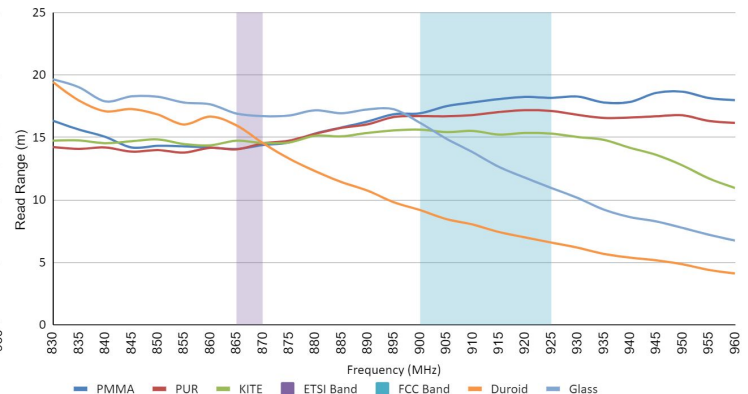
Technical features

Chip	Impinj M781
Chip attachment technology	Direct chip attach (DCA)
EPC and User Memory	128-bit and 512-bit
TID Memory	96-bit / 48-bit unique serial number
Product Code	3009039 / IL-604776
Delivery Format	Wet inlay
Die-Cut Dimension	97 x 15 mm / 3.8 x 0.6 in
Inlay Substrate	PET
Face Sheet	-
Inlay Liner Material	Silicon liner
Standard Pitch	20 mm / 0.79 in
Web Width	100 mm / 3.94 in
Core Size	76 mm / 3 in
Quantity / Reel	20,000 pcs/reel 20,000 pcs/box
Operating Temperature	-40 °C to 85 °C / -40 °F to 185 °F

Read range in Class 1 materials



Read range in Class 2 materials



All graphs are indicative: performance in real life applications may vary.

Contact information

rfid.averydennison.com/contact
+1-678-617-2359

Connect with us on:



© 2021 Avery Dennison Corp. All rights reserved. 170 Monarch Lane, Miamisburg, OH 45342, USA Third party trademarks and/or trade names used herein are the property of their respective owner(s). Some of the trademarks appear for identification purposes only.

Warranty: Please refer to Avery Dennison standard terms and conditions: rfid.averydennison.com/termsandconditions

Care and handling: RFID inlays are sensitive to ESD. Observe standard industry practices relating to electronics / RFID to keep environmental impact and static charge to a minimum.

Applications: This product should be tested by the customer / user thoroughly under end use conditions to ensure the product meets the particular requirements. Avery Dennison does not represent that this product is fit for any particular purpose or use. Avery Dennison reserves the right to modify, change, supplement or discontinue product offerings at any time without notice. The information contained herein is believed to be reliable but Avery Dennison makes no representation concerning the accuracy or correctness of the data.

