

9110 SERIES

MONITOR ARMS



HAT
DESIGN WORKS™
HUMAN ACTIVE TECHNOLOGY

SAVE MAXIMUM SPACE.

The 9110 wall mount is ideal for hanging your display to save maximum space. This flat panel wall mount allows pivot and tilt. You can add optional extender arms to allow even greater flexibility and range.



FEATURES

- **Adjustable:** This computer monitor and flat screen TV wall mount features adjustable tension at joints - ideal for touch-screen applications.
- **Easy:** Easily pivot the monitor from portrait to landscape.
- **Customizable:** Extend the wall mount with available 4" and 8" extension arms; they can also be combined to increase the extension over 17".
- **Compatible:** VESA-monitor compatible - 75mm & 100mm VESA adapter included.

SPECIFICATIONS

Finishes

- Vista Black
104

Dimensions

- Screen Size: Up to 43"
- Extension Range: 3.4" (9110)
7.0" (9110-4)
10.5" (9110-8.5)
13.9" (9110-8.5-4)
17.5" (9110-8.5-8.5)
- Weight Capacity: Up to 30 lbs. (9110)
Up to 30 lbs. (9110-4)
Up to 28 lbs. (9110-8.5)
Up to 22 lbs. (9110-8.5-4)
Up to 18 lbs. (9110-8.5-8.5)

Part Numbers

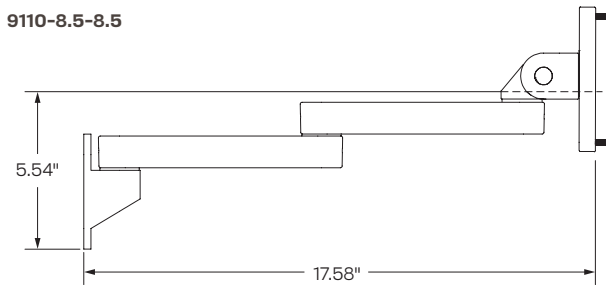
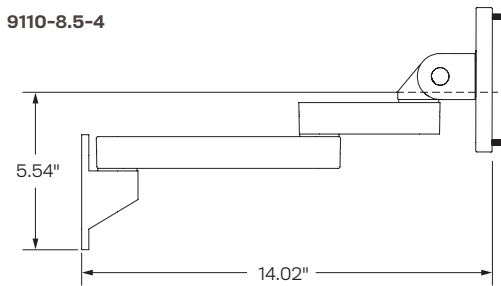
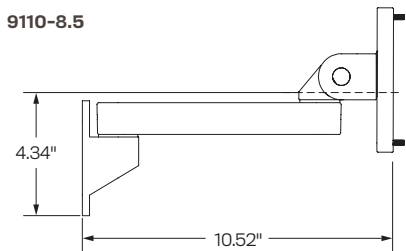
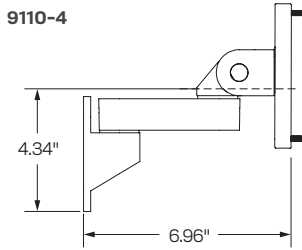
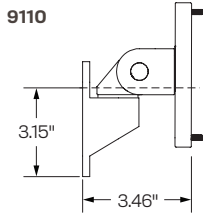
- 9110-___
- 9110-4-___
- 9110-8.5-___
- 9110-8.5-4-___
- 9110-8.5-8.5-___



WARRANTY

10 Years

CAPABILITIES



Mount
(All Models)

