

K419 Mobile Printer

- Industrial quality
- Adjustable paper width
- Bluetooth 4.0
- Support Windows / Android / iOS



Adjustable paper width

Adjustable slide enables fit of different width media rolls in the printer to vary the width of receipts printed.

Label printing

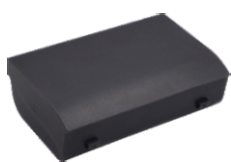
Gap detection and black mark detection ensures smooth and accurate movement of labels through the printer.

Low energy Bluetooth

Supports multiple host connections at reduced power consumption and cost.

Long operating hours

1500mAh battery and highly optimized power management schemes ensure long operating hours without disruptions



Battery



Adapter



Data cable

SPECIFICATION

PRINTER SPECIFICATIONS

Printer Mode	Direct Thermal
Maximum Print Width	4"/104mm
Maximum Print Speed	55mm per second
Resolution	203dpi(8 dots/mm)
Print Life	150km(25%Print density or the following)/Each point: 1.5million pulses
Power	19.76Wh(2600mAh)/7.4V Rechargeable lithium polymer battery
Character Sets	English, Russian, Arabic, Chinese, Japanese, Korean and other languages, characters, graphics curve 1D bar-code: UPC-A, UPC-E, CODE39, EAN-13, EAN-8, CODEBAR, CODE128, CODE93, ITF 2D bar-code: QR Code, PDF417, DATAMATRIX
Programming Languages	ESC/POS CPCL(Compatibility)
Support System	Windows CE/Mobile Support Microsoft Standard SDK, API interface invocation(CE5.0 or above, Mobile5.0 or above) Android Support Google Standard SDK, API interface invocation(2.0 or above) IOS Support IOS System & Supply IOS SDK

MEDIA SPECIFICATIONS

Media Width	46mm-110mm between any print width
Maximum Media Roll Size	56mm
Media Thickness	1.97~7.09mil
Media Type	Labels, Thermal paper

COMMUNICATION

Wired	Type-C
Bluetooth	Bluetooth 2.1+4.0(BLE)

PHYSICAL CHARACTERISTICS

Size(L*W*H)	168mm*113mm*68mm
Weight	500g(with battery)

OTHERS

Charging Time	~2.5h
Stand-by Time	100-120h
Prompt	Paper out prompt, Battery low prompt, Cover/opened prompt, Charging completed prompt, Printing status
Display	OLED screen

ENVIRONMENT

Operating Temperature

Operating Temperature	Min	Max
Operating Humidity(Relative)	41°F(5℃)	104°F(40℃)
	20%	85%

Storage Temperature

Storage Temperature	Min	Max
Storage Temperature (Relative)	-4°F(-20℃)	158°F(70℃)
	5%	95%